



Jill Mayo, Karin Sagar, Shelly Ronen



Kristin Hetterman



Chef Eduardo Pineda



Chef James Simpliciano



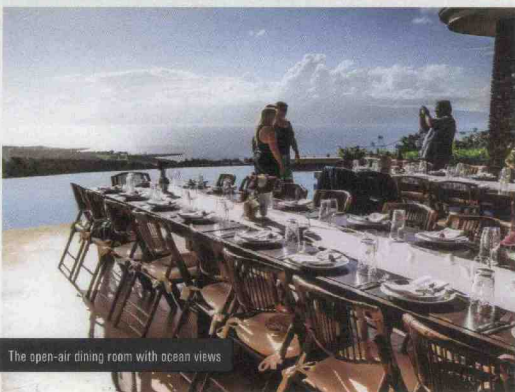
Dania Katz, chef Mark Ellman



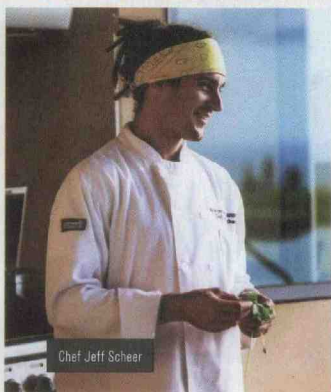
Aimee Singer



Leslie Wilcox thanks Greg Stille for his support to PBS Hawaii.



The open-air dining room with ocean views



Chef Jeff Scheer

## ON THE SCENE

### Above and Beyond

High up in the hills of Kapalua, Kupu Maui threw a locavore feast in support of PBS Hawaii.

### THE PARTY

Kupu Maui, the Valley Isle's roaming gourmet pop-up headed by Dania Katz and chef James Simpliciano, partnered with Gunars and JoRene Valkirs to host an entirely locally sourced dinner for PBS Hawaii at the Valkirses' home in Pineapple Hill in Kapalua.

### THE PLAYERS

Leading Maui chefs Jason Hacker, Isaac Bancaco, Paris Nabavi, Eduardo Pineda, Elizabeth MacDonald and Mark Ellman; Greg and Susy Stille of Pililani Kope Farms

### THE HIGHLIGHTS

As legendary musician George Kahumoku worked his magic, distant views of the Pacific Ocean dazzled guests, creating the perfect atmosphere for the repast to come. (Cocktails made with Maui's own Ocean Vodka helped set the mood, of course.) After a farm tour, guests sat down to dinner, where chefs prepared their own courses and worked wonders with the island-grown ingredients provided by Roxanne Tiffiin of Kula Fields. Moved by the support from Maui, PBS Hawaii President and CEO Leslie Wilcox offered her thanks to everyone in attendance. —KA

**TURN TO PAGE 116 FOR MORE SCENE**

PHOTOS BY PETER LIU